

HEN WHOLE CHICKEN

PRODUCT DESCRIPTION

Dressed European Hen, eviscerated mechanically, without head, neck legs, feet, liver and gizzard.

GENERAL INFORMATION

Use and preservation

Keep refrigerated between 0° and 4° C. Fully cooked before consumption.

Allergens: This product contains traces of **EGG**.

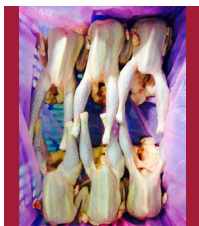
NUTRITIONAL VALUES

* Medium value for each 100g of the product

ENERGETIC VALUE	PROTEIN	FAT
137 Kcal	22 g	5,4 g

PRESENTATION

N° REF	FORMAT	COMMERCIAL DESCRIPTION	PRESENTATION	N° UNITS / PACK	N° PACKS / WRAP	APROX WEIGHT (KG)	DURABLE LIFE DATE
GL200	Box	Eviscerated hen	Fresh product wrapped in a box for safe food use, covered by a bag, labelled individually on the side of the box.	6 Unit/Box		10 Kg	7 Days
GL201	Tray	Eviscerated hen tray	Fresh product packed in tray 3G (PSE, for safe food use labelled individually.	1 Unit/Tray	6 Trays/Box	1,2 Kg	6 Days



GL200
Eviscerated hen



GL201
Eviscerated hen
tray